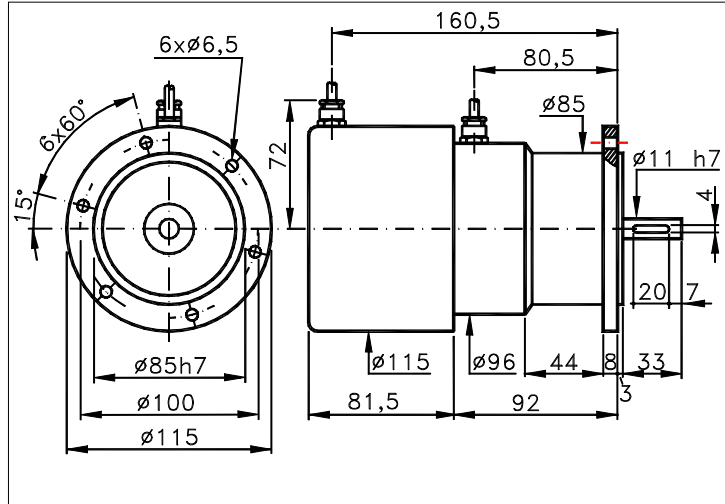


115TT

Sized draw standard version: CC R Measures without tolerance according to UNI ISO 2768-mk



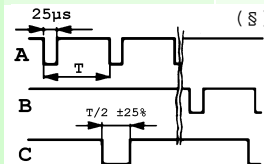
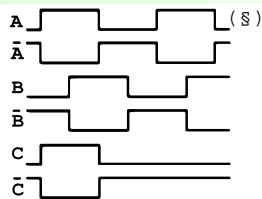
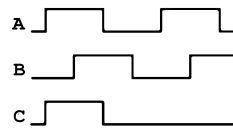
TECHNICAL FEATURES AND POSSIBLE CONFIGURATIONS

- Base.....: ANODIZED ALUMINIUM (\*)
  - Cover.....: ANODIZED ALUMINIUM (\*)
  - Weight.....: 1900 g
  - Shaft.....: Ø 11 STAINLESS STEEL (\*)
  - Max.rad/axial load.: 18 kg
  - IP output side.(°): see 'CONNECTION' of page 2
  - IP shaft side.(°).> std. 65 | sealed 66 | low torq. -
  - opt. type (page 2).> standard | Z
  - Contin. max RPM(\*\*)> 6000 | 3000 | -
  - Starting torque gcm> 350 | 450 | -
  - Ball bearings life....: 1,5 x 10<sup>9</sup> revolutions
  - Impact resistance....: 50 G x 11ms
  - Vibration resistance.: 12 G (10 ÷ 2000 Hz)
  - Power supply.....: 5÷30V (see page 2)
  - Operating temperature: 0 ÷ 70 °C (\*)
  - Storage temperature..: -30 ÷ 85 °C
  - N° of pulses/rev.....: 1 ÷ 3600
  - Max frequency.....: 100 kHz (160 option)
  - Max consumptions mA.: std 120 line driver 180 (\*)
  - Light source.....: LED with >= 100000 h life
- (°) IP according to CEI EN 60529, EN 60529, IEC 529  
(\*) custom options  
(\*\*) intermittent max RPM + 30% of continuous max RPM

ELECTRONICS

CODE	DESCRIPTION	mA	CODE	DESCRIPTION	mA	CODE	DESCRIPTION	mA	CODE	DESCRIPTION	mA
	STANDARD NPN	10	N	DRIVER 26LS31	30	D	DISCRIMINAT.	70			
K	NPN OPEN COLL	10	T	TTL 7404	10						
Q	NPN	70	C	DRIVER 88C30	20						
R	NPN OPEN COLL	70	L	2x PUSH-P.PRO	70						
P	PNP	70	M	2x PUSH-PULL	70						
U	PNP OPEN COLL	70									
B	PUSH-PULL PRO	70									
H	PUSH-PULL	70									

(§) Clock-wise output rotation (see shaft).



Tolerance between phases ± 25°, symmetry ± 15°

(§) Clock-wise output rotation (see shaft).



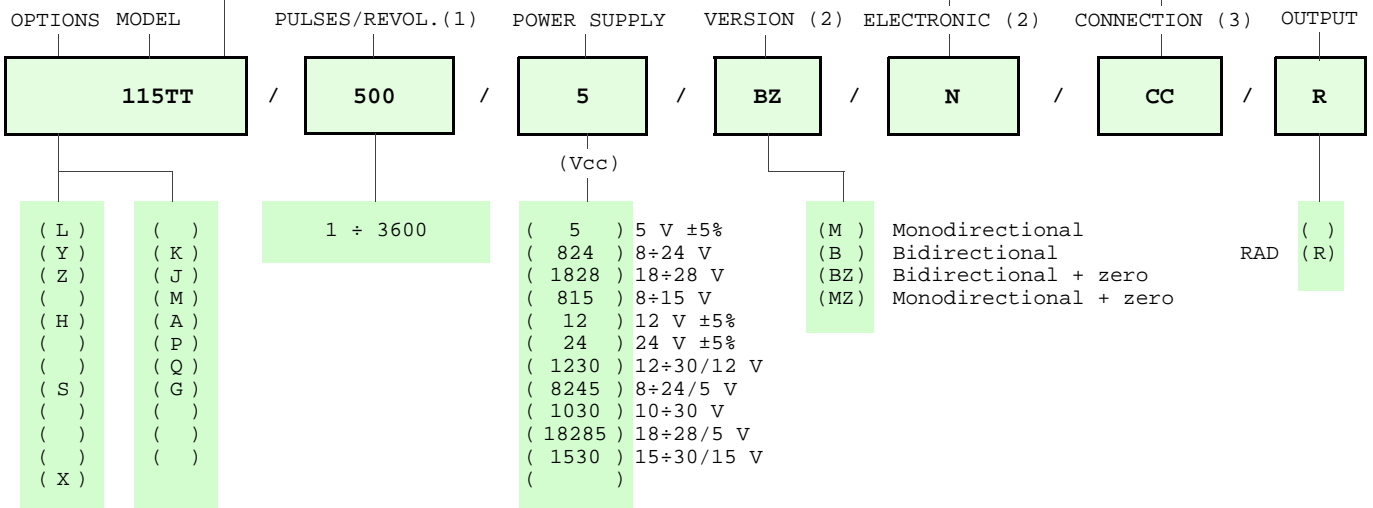
ELCIS s.r.l. Via Rosa Luxembourg 12/14 10093 COLLEGNO (TO) ITALY  
Phone: +39 011 715577/78 a.r.  
MAIL: ELCIS s.r.l. P.O.Box 90 10093 COLLEGNO (TO) ITALY

\* <http://www.elcis.com>  
\* e-mail: [info@elcis.com](mailto:info@elcis.com)  
\* Fax: +39 011 712613

POSSIBLE OPTIONS				POSSIBLE CONNECTIONS	
CODE	DESCRIPTION	CODE	DESCRIPTION	CABLE	OUTPUT:
L	Low temperature	K	Invert. phase A,B,Zero.	CC	RAD
Y	Unbreakable disk	J	Zero logic combination		
Z	Sealed ball bearing	M	Impregnated electronic	CONNECTOR	OUTPUT:
H	Different shaft Ø	A	High temperature	ML MM	
		P	Compressed air attack	SML SMM	RAD
S	160 KHz frequency	Q	Oil seal	CABLE END CONNECTOR	OUTPUT:
		G	Tropicalization	VML VMM	
X	Custom options			TML TMM	RAD
				TERMINAL BOX	OUTPUT:

### ORDERING INFORMATION


POSSIBLE SHAFT Ø		CABLE	CONNECTOR	CABLE END CONNECTOR
( )	( ) STANDARD NPN	IP65		IP65 encoder output
( )	( K ) NPN OPEN COLL		Dyn.+ Enc.	Dyn.+ Enc.
( )	( Q ) NPN			
( )	( R ) NPN OPEN COLL			
( )	( P ) PNP	( )		
( )	( U ) PNP OPEN COLL	( CC )	CV + CV	
( n )	( B ) PUSH-PULL PRO	( )		
	( H ) PUSH-PULL	TERMINAL BOX		
( )	( N ) DRIVER 26LS31	IP00		
( )	( T ) TTL 7404			
( )	( C ) DRIVER 88C30			
( )	( L ) 2x PUSH-P.PRO	( )		
( )	( M ) 2x PUSH-PULL			
( )	( D ) DISCRIMINAT.			
( )	( X ) CUSTOM OPTION			
( )	( )			
( )	( )			
( )	( )			
( )	( )			



NOTE: FOR 88C30 MAX 15 Vdc

Product manufactured according to UNI EN ISO 9001:2000 supplied with CHECKING and CONFORMITY declaration with CE mark and with TWO (2) YEARS WARRANTY starting from delivery date.

- (1) For further information see PULSES/REVOL. data sheet
- (2) For further information see ELECTRONIC data sheet
- (3) For further information see CONNECTION data sheet

	<p>ELCIS s.r.l. Via Rosa Luxembourg 12/14 10093 COLLEGNO (TO) ITALY          Phone: +39 011 715577/78 a.r.          MAIL: ELCIS s.r.l. P.O.Box 90 10093 COLLEGNO (TO) ITALY</p>	<p>* <a href="http://www.elcis.com">http://www.elcis.com</a>          * e-mail: <a href="mailto:info@elcis.com">info@elcis.com</a>          * Fax: +39 011 712613</p>
--	---	---

COPYRIGHT by ELCIS - Collegno (TO)