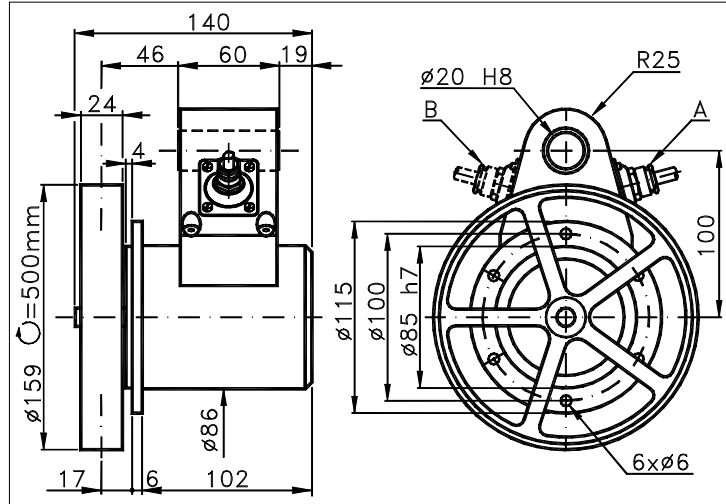


Sized draw standard version: CV Measures without tolerance according to UNI ISO 2768-mk

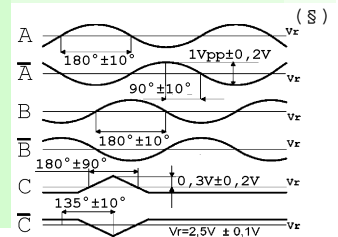
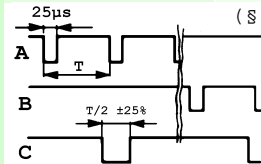
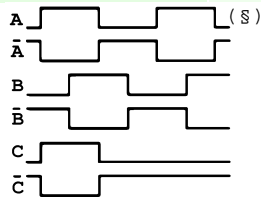
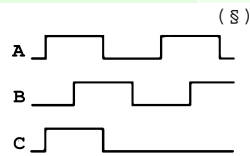


TECHNICAL FEATURES AND POSSIBLE CONFIGURATIONS

- Base.....: ANODIZED ALUMINIUM (*)
 - Cover.....: ANODIZED ALUMINIUM (*)
 - Weight.....: 2800 g
 - Shaft.....: Ø 11 STAINLESS STEEL (*)
 - Max.rad/axial load.: 10 kg
 - IP output side.(°): see 'CONNECTION' of page 2
 - IP shaft side.(°):> std. 66 | sealed 67 | low torq. 53
 - opt. type (page 2):> standard | Z | B
 - Contin. max RPM(**):> 4500 | 3000 | 6000
 - Starting torque gcm> 90 | 150 | 45
 - Ball bearings life....: 1,5 x 10⁹ revolutions
 - Impact resistance....: 50 G x 11ms
 - Vibration resistance.: 12 G (10 ÷ 2000 Hz)
 - Power supply.....: 5÷30V (see page 2)
 - Operating temperature: 0 ÷ 70 °C (*)
 - Storage temperature...: -30 ÷ 85 °C
 - N° of pulses/rev.....: 1 ÷ 5000
 - Max frequency.....: 60 kHz (100 option)
 - Max consumptions mA...: std 120 line driver 180 (*)
 - Light source.....: LED with >= 100000 h life
- (°) IP according to CEI EN 60529, EN 60529, IEC 529
(*) custom options
(**) intermittent max RPM + 30% of continuous max RPM

ELECTRONICS

CODE	DESCRIPTION	mA	CODE	DESCRIPTION	mA	CODE	DESCRIPTION	mA	CODE	DESCRIPTION	mA
	STANDARD NPN	10	N	DRIVER 26LS31	30	D	DISCRIMINAT.	70	Y	SINUSOID. 1Vpp	10
K	NPN OPEN COLL	10	T	TTL 7404	10						
Q	NPN	70	C	DRIVER 88C30	20						
R	NPN OPEN COLL	70	L	2x PUSH-P.PRO	70						
P	PNP	70	M	2x PUSH-PULL	70						
U	PNP OPEN COLL	70									
B	PUSH-PULL PRO	70									
H	PUSH-PULL	70									



Tolerance between phases ± 25°, symmetry ± 15°

(§) Clock-wise output rotation (see shaft).



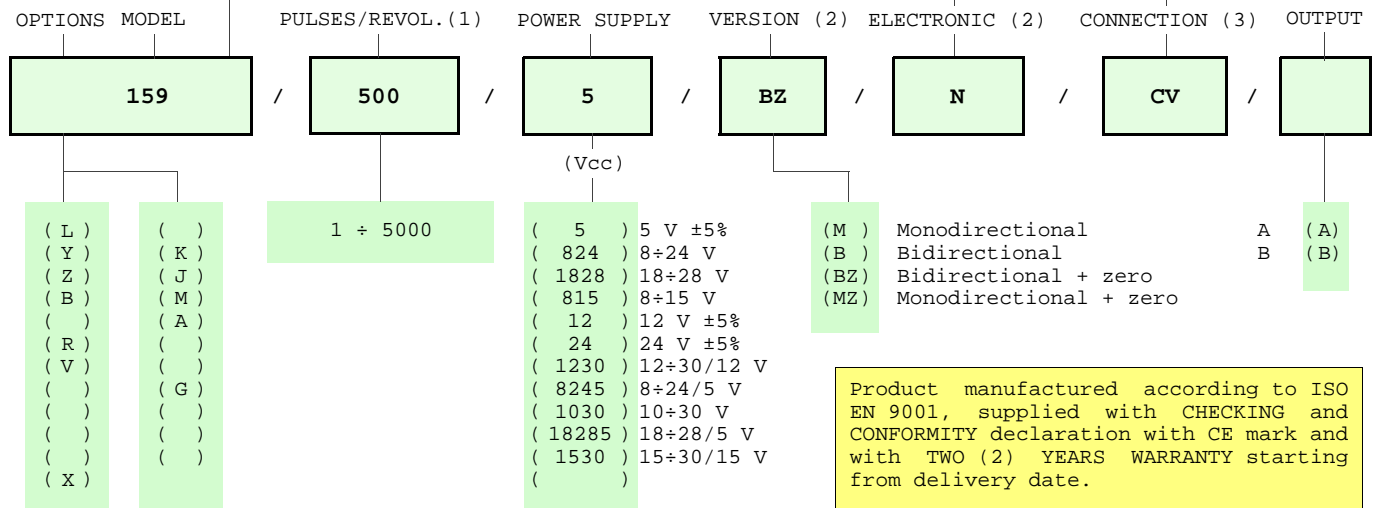
ELCIS s.r.l. Via Rosa Luxembourg 12/14 10093 COLLEGNO (TO) ITALY
Phone: +39 011 715577/78 a.r.
MAIL: ELCIS s.r.l. P.O.Box 90 10093 COLLEGNO (TO) ITALY

* <http://www.elcis.com>
* e-mail: info@elcis.com
* Fax: +39 011 712613

POSSIBLE OPTIONS				POSSIBLE CONNECTIONS								
CODE	DESCRIPTION	CODE	DESCRIPTION	CABLE				OUTPUT:				
L	Low temperature	K	Invert. phase A,B,Zero.	CV				A				
Y	Unbreakable disk	J	Zero logic combination	CONNECTOR				B				
Z	Sealed ball bearing	M	Impregnated electronic	CM	SM	CL	SL	CH	CH5	CI	A	
B	Low torque ball bear.	A	High temperature	CH6				B				
R	75 KHz frequency	G		CABLE END CONNECTOR				OUTPUT:				
V	100 KHz frequency	Tropicalization		VM	TM	VL	TL	VD	VH	VH5	VI	A
				VE	VK	TK	VN	VH6	VM5	VM9	VS	B
				VD5								
X	Custom options			TERMINAL BOX				OUTPUT:				


ORDERING INFORMATION

POSS. MEAS. WHEEL		CABLE	CONNECTOR	CABLE END CONNECTOR
()	() STANDARD NPN	IP65		IP65 encoder output
()	(K) NPN OPEN COLL	(CV) 1 m long	(CM) 7c norm. IP65	(VM) 7c normal
()	(Q) NPN		(SM) 7c sealed IP66	(TM) 7c sealed
()	(R) NPN OPEN COLL		(CL) 10c norm. IP65	(VL) 10c normal
()	(P) PNP		(SL) 10c sealed IP66	(TL) 10c sealed
()	(U) PNP OPEN COLL			(VD) 9c
()	(B) PUSH-PULL PRO		(CH) 12c ccw IP67	(VH) 12c anticlock.
()	(H) PUSH-PULL	TERMINAL BOX	(CH5) 12c cw IP67	(VH5) 12c clock-wise
()	(N) DRIVER 26LS31	IP00	(CI) 12c crimp. IP64	(VI) 12c crimped
()	(T) TTL 7404			(VE) 5c
(A)	(C) DRIVER 88C30			(VK) 17c normal
(B)	(L) 2x PUSH-P.PRO			(TK) 17c sealed
(C)	(M) 2x PUSH-PULL		(CH6) 12c cw IP67	(VN) 12c
()	(D) DISCRIMINAT.			(VH6) 12c clock-wise
()	(Y) SINUSOID.1Vpp			(VM5) 26c
()	(X) CUSTOM OPTION			(VM9) 16c
()				(VS) 12c
()				(VD5) 9c screened



NOTE: FOR 88C30 MAX 15 Vdc

- (1) For further information see PULSES/REVOL. data sheet
- (2) For further information see ELECTRONIC data sheet
- (3) For further information see CONNECTION data sheet

	ELCIS s.r.l. Via Rosa Luxembourg 12/14 10093 COLLEGNO (TO) ITALY	* http://www.elcis.com
	Phone: +39 011 715577/78 a.r.	* e-mail: info@elcis.com
	MAIL: ELCIS s.r.l. P.O.Box 90 10093 COLLEGNO (TO) ITALY	* Fax: +39 011 712613

COPYRIGHT by ELCIS - Collegno (TO)