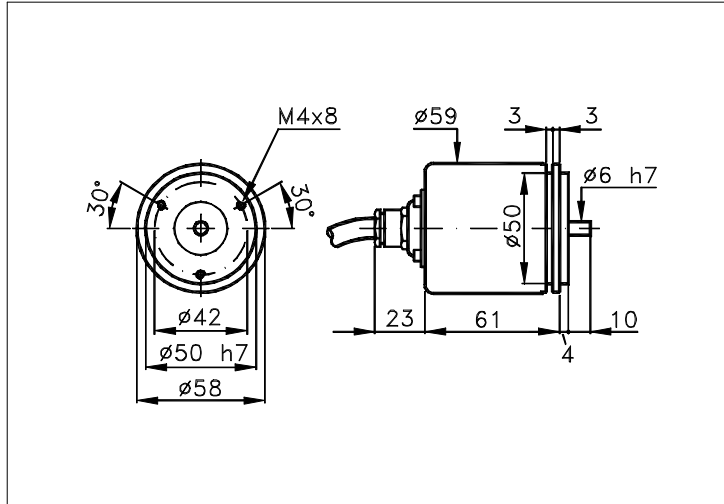


Sized draw standard version: CW Measures without tolerance according to UNI ISO 2768-mk

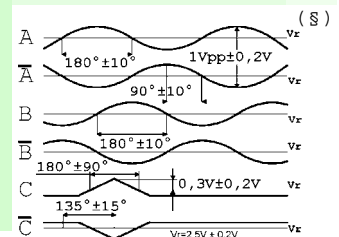
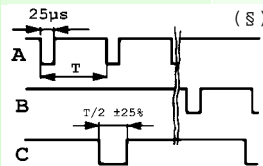
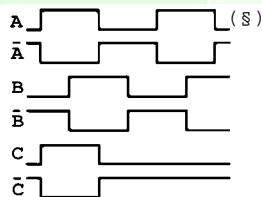
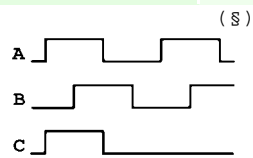


TECHNICAL FEATURES AND POSSIBLE CONFIGURATIONS

- Base.....: ANODIZED ALUMINIUM (*)
 - Cover.....: STAINLESS STEEL (*)
 - Weight.....: 520 g
 - Shaft.....: $\phi 6$ STAINLESS STEEL (*)
 - Max.rad/axial load.: 3 kg
 - IP output side.(°): see 'CONNECTION' of page 2
 - IP shaft side.(°)> std. 64 | sealed 66 | low torq. 53
 - opt. type (page 2)> standard | Z | B
 - Contin. max RPM(**)> 8000 | 3000 | 12000
 - Starting torque gcm> 18 | 30 | 8
 - Ball bearings life...: $1,5 \times 10^9$ revolutions
 - Impact resistance....: 50 G x 11ms
 - Vibration resistance..: 12 G (10 ÷ 2000 Hz)
 - Power supply.....: 5÷30V (see page 2)
 - Operating temperature: 0 ÷ 70 °C (*)
 - Storage temperature...: -30 ÷ 85 °C
 - N° of pulses/rev.....: 1 ÷ 25000
 - Max frequency.....: 100 kHz (300 option)
 - Max consumptions mA...: std 120 line driver 180 (*)
 - Light source.....: LED with ≥ 100000 h life
- (°) IP according to CEI EN 60529, EN 60529, IEC 529
(*) custom options
(**) intermittent max RPM + 30% of continuous max RPM

ELECTRONICS

| CODE | DESCRIPTION | mA | CODE | DESCRIPTION | mA | CODE | DESCRIPTION | mA | CODE | DESCRIPTION | mA |
|------|---------------|----|------|---------------|----|------|--------------|----|------|----------------|----|
| | STANDARD NPN | 10 | N | DRIVER 26LS31 | 30 | D | DISCRIMINAT. | 70 | Y | SINUSOID. 1Vpp | 10 |
| K | NPN OPEN COLL | 10 | T | TTL 7404 | 10 | | | | | | |
| Q | NPN | 70 | C | DRIVER 88C30 | 20 | | | | | | |
| R | NPN OPEN COLL | 70 | L | 2x PUSH-P.PRO | 70 | | | | | | |
| P | PNP | 70 | M | 2x PUSH-PULL | 70 | | | | | | |
| U | PNP OPEN COLL | 70 | | | | | | | | | |
| B | PUSH-PULL PRO | 70 | | | | | | | | | |
| H | PUSH-PULL | 70 | | | | | | | | | |



Tolerance between phases $\pm 25^\circ$, symmetry $\pm 15^\circ$

(§) Clock-wise output rotation (see shaft).

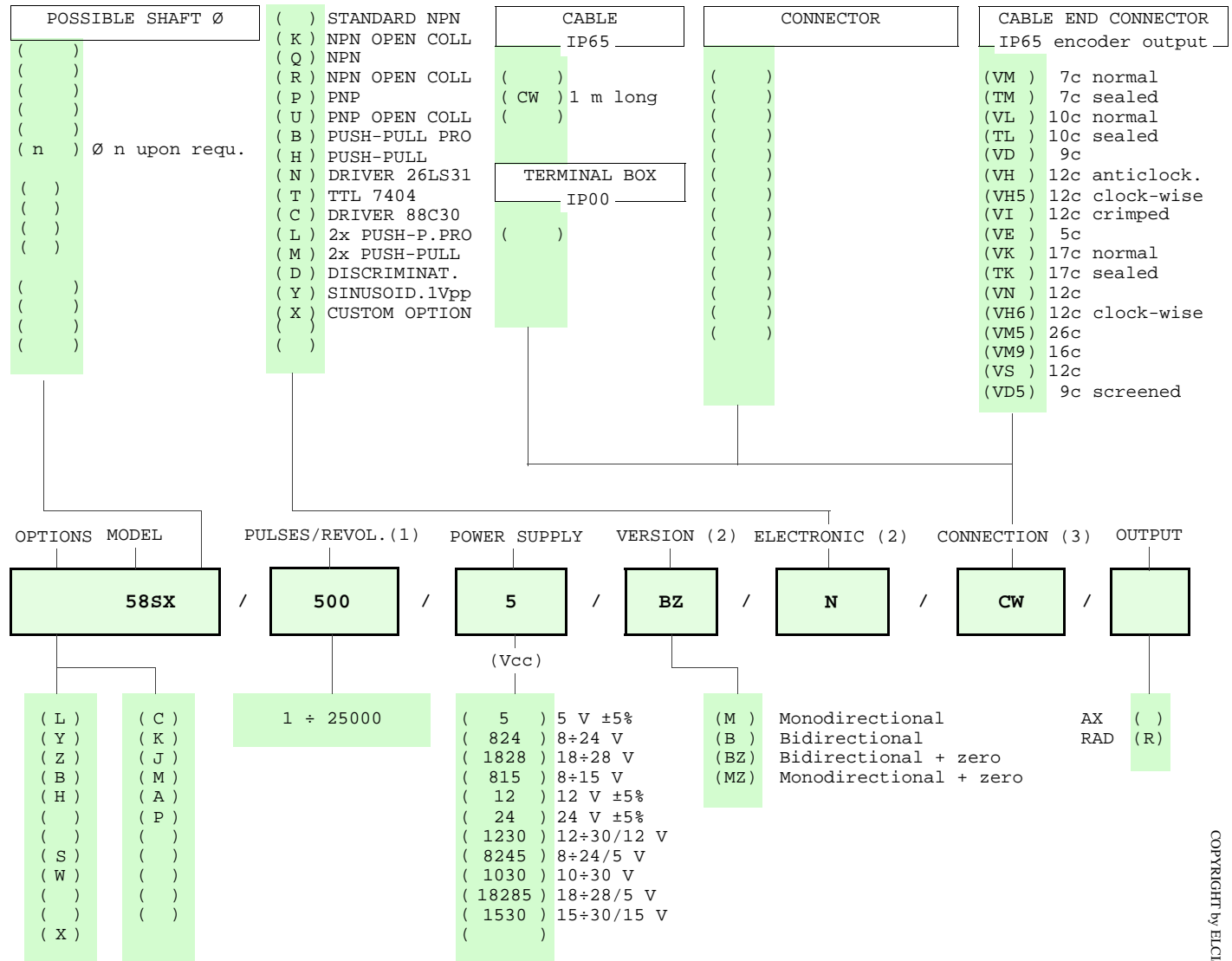


ELCIS s.r.l. Via Rosa Luxembourg 12/14 10093 COLLEGNO (TO) ITALY
Phone: +39 011 715577/78 a.r.
MAIL: ELCIS s.r.l. P.O.Box 43 10093 COLLEGNO (TO) ITALY

* <http://www.elcis.com>
* e-mail: info@elcis.com
* Fax: +39 011 712613

| POSSIBLE OPTIONS | | | | POSSIBLE CONNECTIONS | | | | | | | | |
|------------------|-----------------------|------|-------------------------|----------------------|----|----|----|----------------------|-----|-----|----|-----|
| CODE | DESCRIPTION | CODE | DESCRIPTION | | | | | | | | | |
| L | Low temperature | C | Low consumption | CABLE | | | | | | | | |
| Y | Unbreakable disk | K | Invert. phase A,B,Zero. | CW | | | | OUTPUT: AX RAD | | | | |
| Z | Sealed ball bearing | J | Zero logic combination | CONNECTOR | | | | OUTPUT: | | | | |
| B | Low torque ball bear. | M | Impregnated electronic | | | | | | | | | |
| H | Different shaft Ø | A | High temperature | CABLE END CONNECTOR | | | | OUTPUT: | | | | |
| | | P | Compressed air attack | | | | | | | | | |
| S | 160 KHz frequency | | | VM | TM | VL | TL | VD | VH | VH5 | VI | AX |
| W | 300 KHz frequency | | | VE | VK | TK | VN | VH6 | VM5 | VM9 | VS | RAD |
| | | | | VD5 | | | | | | | | |
| X | Custom options | | | TERMINAL BOX | | | | OUTPUT: | | | | |


ORDERING INFORMATION



NOTE: FOR 88C30 MAX 15 Vdc

Product manufactured according to UNI EN ISO 9001:2000, supplied with CHECKING and CONFORMITY declaration with CE mark and with TWO (2) YEARS WARRANTY starting from delivery date.

- (1) For further information see PULSES/REVOL. data sheet
- (2) For further information see ELECTRONIC data sheet
- (3) For further information see CONNECTION data sheet

| | | |
|--|--|--|
|  | ELCIS s.r.l. Via Rosa Luxembourg 12/14 10093 COLLEGNO (TO) ITALY Phone: +39 011 715577/78 a.r. MAIL: ELCIS s.r.l. P.O.Box 43 10093 COLLEGNO (TO) ITALY | * http://www.elcis.com * e-mail: info@elcis.com * Fax: +39 011 712613 |
|--|--|--|

COPYRIGHT by ELCIS - Collegno (TO)