

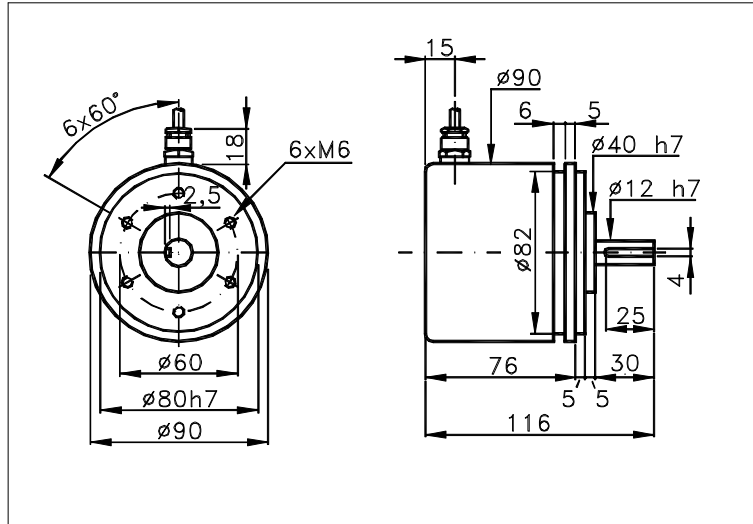
INCREMENTAL ENCODER

90G

ENCODER EXPECIALLY DESIGNED FOR PARTICULARLY SEVERE AND/OR CORROSIVE ENVIRONMENTAL CONDITIONS. ENTIRELY STAINLESS STEEL MANUFACTURED AND SUITABLE FOR CHEMICAL, FOOD AND MARINE INDUSTRIES.

Family: **I**
page: 08. 90G 1/2
data sheet . II 084 E0A

Sized draw standard version: CV R Measures without tolerance according to UNI ISO 2768-mk

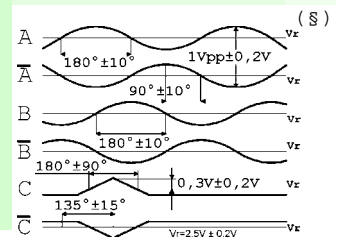
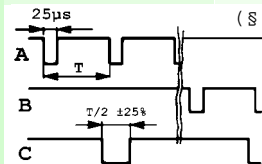
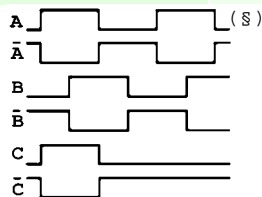
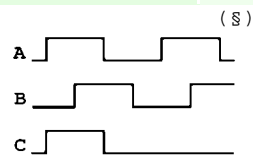


TECHNICAL FEATURES AND POSSIBLE CONFIGURATIONS

- Base.....: STAINLESS STEEL (*)
 - Cover.....: STAINLESS STEEL (*)
 - Weight.....: 2000 g
 - Shaft.....: Ø 12 STAINLESS STEEL (*)
 - Max.rad/axial load.: 15 kg
 - IP output side.(°): see 'CONNECTION' of page 2
 - IP shaft side.(°).> std. 65 | sealed 66 | low torq. 53
 - opt. type (page 2).> standard | Z | B
 - Contin. max RPM(**)> 6000 | 3000 | 8000
 - Starting torque gcm> 90 | 150 | 45
 - MTTFd (°°).....: HIGH
 - Impact resistance.....: 50 G x 11ms
 - Vibration resistance.: 12 G (10 ÷ 2000 Hz)
 - Power supply.....: 5÷30V (see page 2)
 - Operating temperature: -20÷+85 °C (*)
 - Storage temperature...: -30 ÷ 85 °C
 - N° of pulses/rev.....: 1 ÷ 90000
 - Max frequency.....: 100 kHz (300 option)
 - Max consumptions mA.: std 120 line driver 180 (*)
- (°) IP according to CEI EN 60529, EN 60529, IEC 529
(*) custom options
(°°) MTTFd according to EN ISO 13849-1
(**) intermittent max RPM + 30% of continuous max RPM

ELECTRONICS

CODE	DESCRIPTION	mA	CODE	DESCRIPTION	mA	CODE	DESCRIPTION	mA	CODE	DESCRIPTION	mA
	STANDARD NPN	10	N	DRIVER 26LS31	30	D	DISCRIMINAT.	70	Y	SINUSOID. 1Vpp	10
K	NPN OPEN COLL	10	T	TTL 7404	10						
Q	NPN	70	C	DRIVER 88C30	20						
R	NPN OPEN COLL	70	L	2x PUSH-P.PRO	70						
P	PNP	70	M	2x PUSH-PULL	70						
U	PNP OPEN COLL	70									
B	PUSH-PULL PRO	70									
H	PUSH-PULL	70									



Tolerance between phases ± 25°, symmetry ± 15°

(§) Clock-wise output rotation (see shaft).

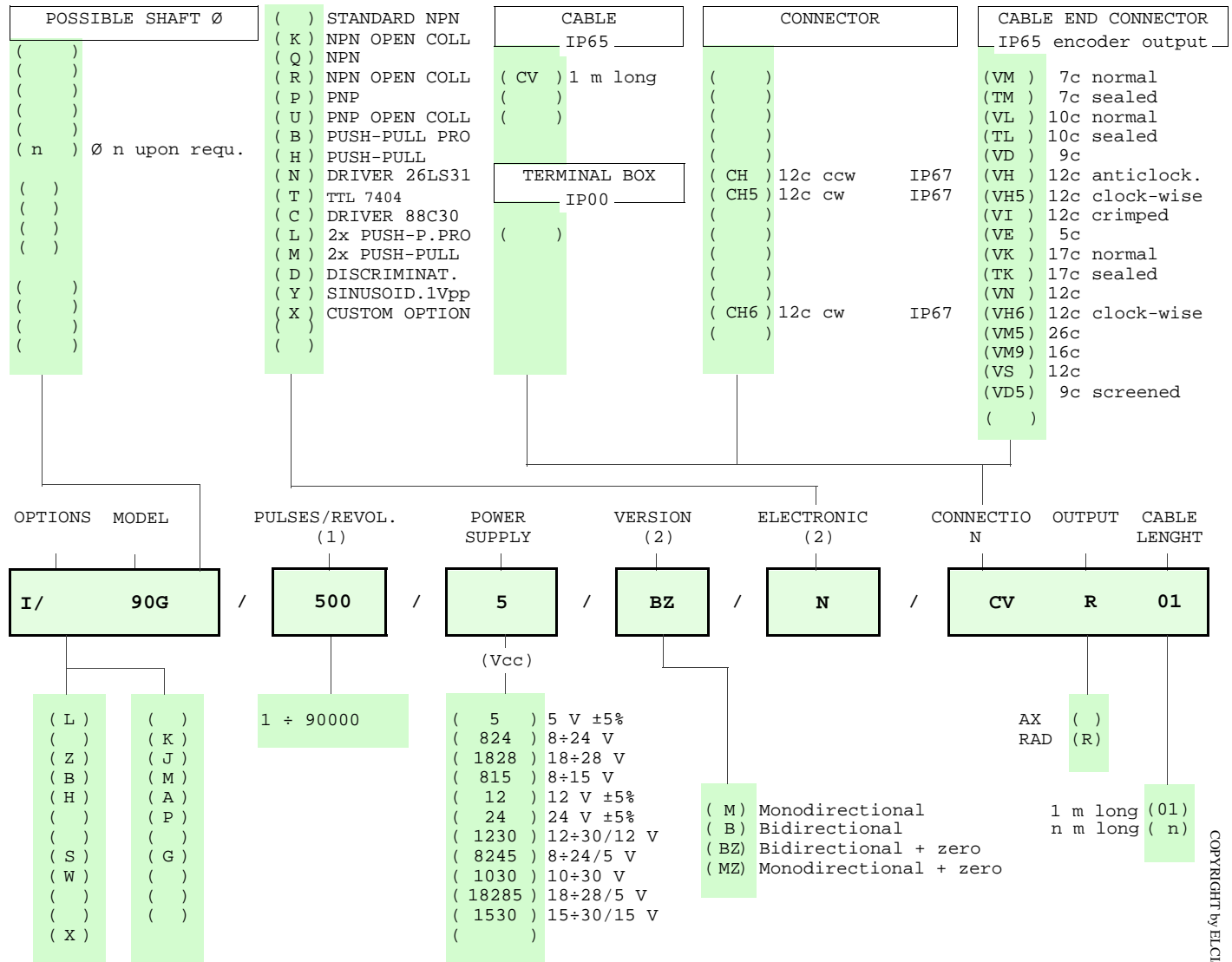


ELCIS encoder s.r.l. Via Rosa Luxembourg 12/14 10093 COLLEGNO (TO) ITALY
Phone: +39 011 715577/78 a.r.
MAIL: ELCIS encoder s.r.l. P.O.Box 70 10093 COLLEGNO (TO) ITALY

* <http://www.elcis.com>
* e-mail: info@elcis.com
* Fax: +39 011 712613

POSSIBLE OPTIONS				POSSIBLE CONNECTIONS								
CODE	DESCRIPTION	CODE	DESCRIPTION	CABLE			OUTPUT:					
L	Low temperature			CV			AX RAD					
Z	Sealed ball bearing	J	Zero logic combination	CONNECTOR			OUTPUT:					
B	Low torque ball bear.	M	Impregnated electronic		CH	CH5	AX					
H	Different shaft Ø	A	High temperature		CH6		RAD					
S	160 KHz frequency	P	Compressed air attack	CABLE END CONNECTOR			OUTPUT:					
W	300 KHz frequency	K	Invert. phase A,B,Zero.	VM	TM	VL	TL	VD	VH	VH5	VI	AX
X	Custom options			VE	VK	TK	VN	VH6	VM5	VM9	VS	RAD
G	Tropicalization			VD5								
				TERMINAL BOX			OUTPUT:					


ORDERING INFORMATION



NOTE: FOR 88C30 MAX 15 Vdc

Product manufactured according to UNI EN ISO 9001:2008, supplied with CHECKING and CONFORMITY declaration with CE mark and with TWO (2) YEARS WARRANTY starting from delivery date.

- (1) For further information see PULSES/REVOL. data sheet
- (2) For further information see ELECTRONIC data sheet
- (3) For further information see CONNECTION data sheet

	ELCIS encoder s.r.l. Via Rosa Luxembourg 12/14 10093 COLLEGNO (TO) ITALY	* http://www.elcis.com
	Phone: +39 011 715577/78 a.r.	* e-mail: info@elcis.com
	MAIL: ELCIS encoder s.r.l. P.O.Box 70 10093 COLLEGNO (TO) ITALY	* Fax: +39 011 712613

COPYRIGHT by ELCIS - Collegno (TO)