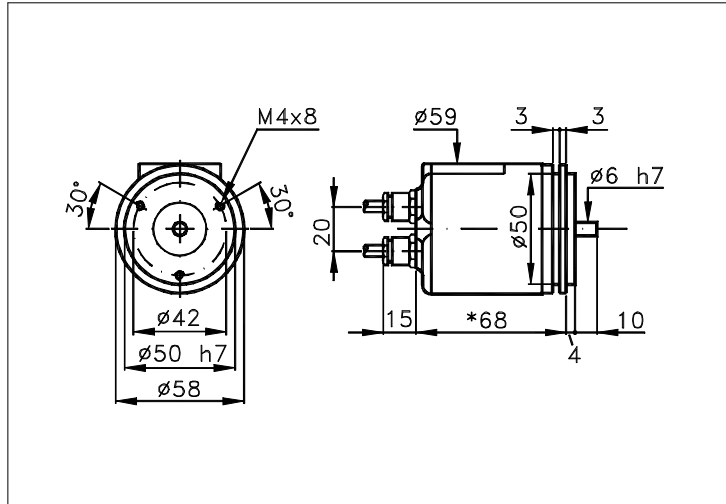


Sized draw standard version: CV Measures without tolerance according to UNI ISO 2768-mk



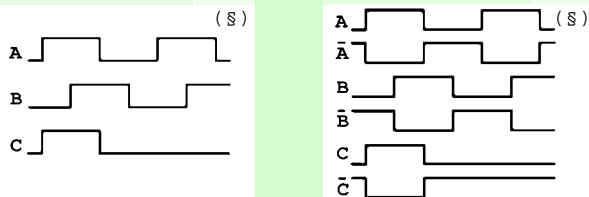
* 86 FOR OUTPUT HH-R.

TECHNICAL FEATURES AND POSSIBLE CONFIGURATIONS

- Base.....: ANODIZED ALUMINIUM (*)
 - Cover.....: ANODIZED ALUMINIUM (*)
 - Weight.....: 550 g
 - Shaft.....: Ø 6 STAINLESS STEEL (*)
 - Max.rad/axial load.: 3 kg
 - IP output side.(°): see 'CONNECTION' of page 2
 - IP shaft side..(°):> std. 64 | sealed 66 | low torq. 53
 - opt. type (page 2):> standard | Z | B
 - Contin. max RPM(**): 8000 | 3000 | 12000
 - Starting torque gcm> 18 | 30 | 8
 - Ball bearings life...: 1,5 x 9¹⁰ revolutions
 - Impact resistance....: 50 G x 11ms
 - Vibration resistance..: 12 G (10 ÷ 2000 Hz)
 - Power supply.....: 5÷30V (see page 2)
 - Operating temperature: 0 ÷ 70 °C (*)
 - Storage temperature...: -30 ÷ 85 °C
 - N° of pulses/rev.....: 1 ÷ 3600
 - Max frequency.....: 100 kHz (300 option)
 - Max consumptions mA...: std 120 line driver 180 (*)
- (°) IP according to CEI EN 60529, EN 60529, IEC 529
(*) custom options
(°°) MTTFd according to EN ISO 13849-1
(**) intermittent max RPM + 30% of continuous max RPM

ELECTRONICS

CODE	DESCRIPTION	mA	CODE	DESCRIPTION	mA	CODE	DESCRIPTION	mA	CODE	DESCRIPTION	mA
	STANDARD NPN	10	N	DRIVER 26LS31	30						
K	NPN OPEN COLL	10	T	TTL 7404	10						
Q	NPN	70	C	DRIVER 88C30	20						
R	NPN OPEN COLL	70									
P	PNP	70									
U	PNP OPEN COLL	70									
B	PUSH-PULL PRO	70									
H	PUSH-PULL	70									



Tolerance between phases ± 25° , symmetry ± 15°

(§) Clock-wise output rotation (see shaft).

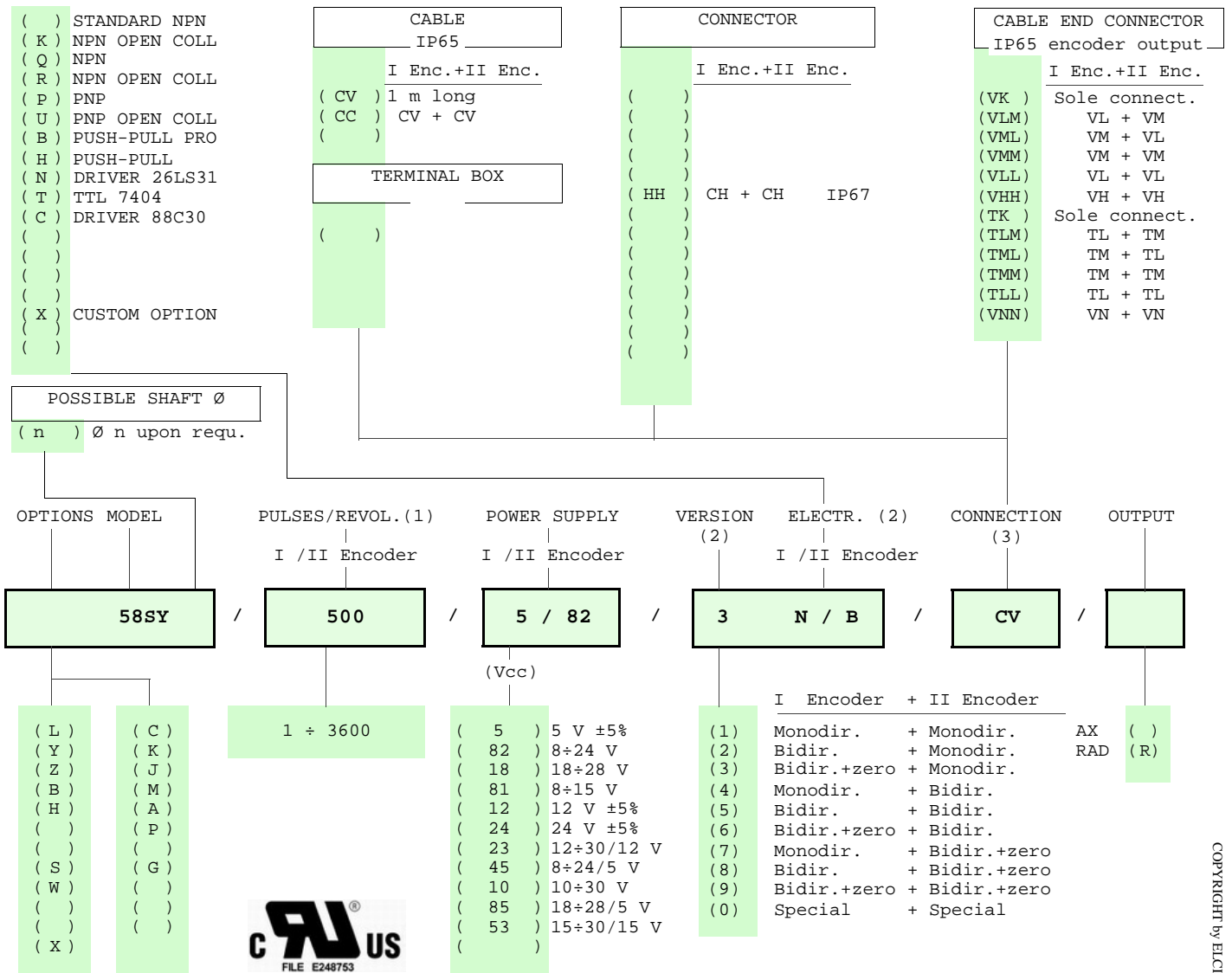


ELCIS encoder s.r.l. Via Rosa Luxembourg 12/14 10093 COLLEGNO (TO) ITALY
Phone: +39 011 715577/78 a.r.
MAIL: ELCIS encoder s.r.l. P.O.Box 70 10093 COLLEGNO (TO) ITALY

* <http://www.elcis.com>
* e-mail: info@elcis.com
* Fax: +39 011 712613



POSSIBLE OPTIONS				POSSIBLE CONNECTIONS								
CODE	DESCRIPTION	CODE	DESCRIPTION	CABLE			OUTPUT:					
L	Low temperature	C	Low consumption	CV	CC		AX RAD					
Y	Unbreakable disk	K	Invert. phase A,B,Zero.	CONNECTOR			OUTPUT:					
Z	Sealed ball bearing	J	Zero logic combination	HH			RAD					
B	Low torque ball bear.	M	Impregnated electronic	CABLE END CONNECTOR			OUTPUT:					
H	Different shaft Ø	A	High temperature	VK	VLM	VML	VMM	VLL	VHH	TK	TLM	AX RAD
S	160 KHz frequency	P	Compressed air attack	TML	TMM	TLL	VNN	TERMINAL BOX			OUTPUT:	
W	300 KHz frequency	G	Tropicalization									
X	Custom options											

ORDERING INFORMATION



Product manufactured according to UNI EN ISO 9001:2008, supplied with CHECKING and CONFORMITY declaration with CE mark and with TWO (2) YEARS WARRANTY starting from delivery date.

(1) For further information see PULSES/REVOL. data sheet
(2) For further information see ELECTRONIC data sheet
(3) For further information see CONNECTION data sheet

	ELCIS encoder s.r.l. Via Rosa Luxembourg 12/14 10093 COLLEGNO (TO) ITALY Phone: +39 011 715577/78 a.r.		* http://www.elcis.com * e-mail: info@elcis.com * Fax: +39 011 712613
	COPYRIGHT by ELCIS - Collegno (TO)		